


**LEGEND**

 = WORK ZONE

 = WORK ZONE SIGN

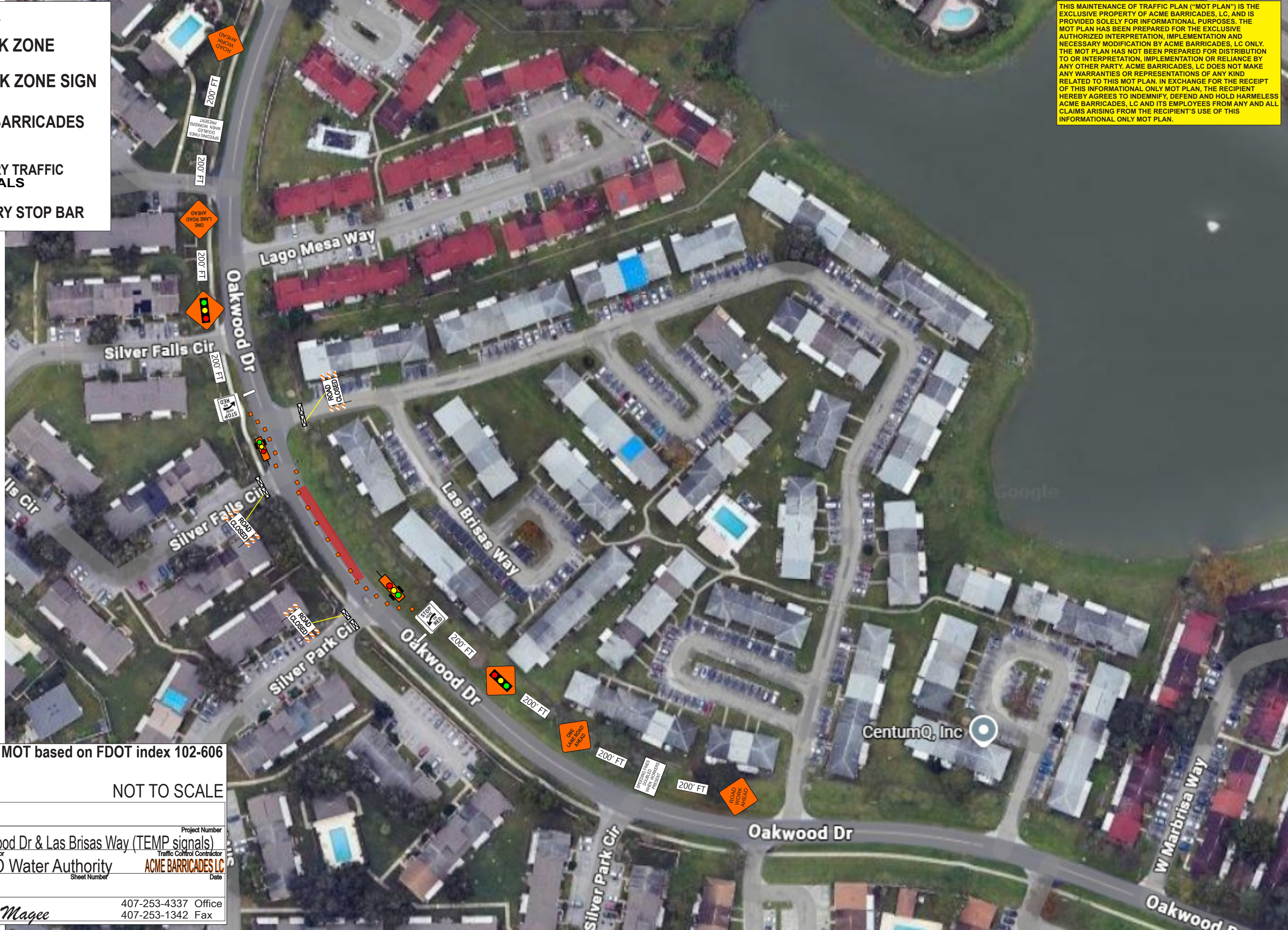
 = TYPE III BARRICADES

 = DRUMS

 = TEMPORARY TRAFFIC SIGNALS

 = TEMPORARY STOP BAR

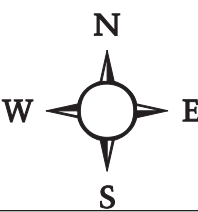
THIS MAINTENANCE OF TRAFFIC PLAN ("MOT PLAN") IS THE EXCLUSIVE PROPERTY OF ACME BARRICADES, LC, AND IS PROVIDED SOLELY FOR INFORMATIONAL PURPOSES. THE MOT PLAN HAS BEEN PREPARED FOR THE EXCLUSIVE AUTHORIZED INTERPRETATION, IMPLEMENTATION AND NECESSARY MODIFICATION BY ACME BARRICADES, LC ONLY. THE MOT PLAN HAS NOT BEEN PREPARED FOR DISTRIBUTION TO OR INTERPRETATION, IMPLEMENTATION OR RELIANCE BY ANY OTHER PARTY. ACME BARRICADES, LC DOES NOT MAKE ANY WARRANTIES OR REPRESENTATIONS OF ANY KIND RELATED TO THIS MOT PLAN. IN EXCHANGE FOR THE RECEIPT OF THIS INFORMATIONAL ONLY MOT PLAN, THE RECIPIENT HEREBY AGREES TO INDEMNIFY, DEFEND AND HOLD HARMLESS ACME BARRICADES, LC AND ITS EMPLOYEES FROM ANY AND ALL CLAIMS ARISING FROM THE RECIPIENT'S USE OF THIS INFORMATIONAL ONLY MOT PLAN.



MOT based on FDOT index 102-606

SPEED LIMIT  
**30**

NOT TO SCALE



Owner	
Project Name <b>Oakwood Dr &amp; Las Brisas Way (TEMP signals)</b>	Project Number
Prime Contractor <b>TOHO Water Authority</b>	Traffic Control Contractor <b>ACME BARRICADES LC</b>
Phone	Date
Prepared By <i>Sean Magee</i>	407-253-4337 Office 407-253-1342 Fax