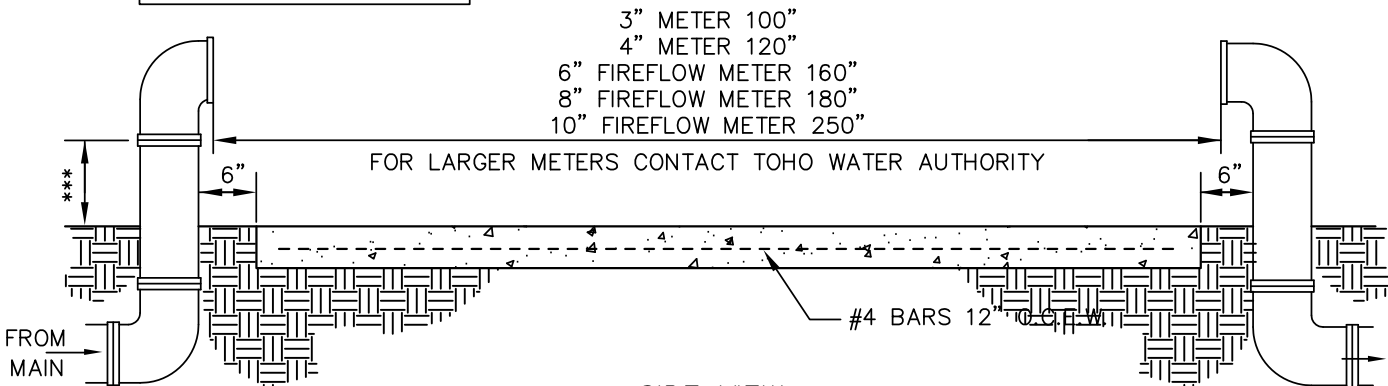


TOP VIEW

*** 18" FOR UP TO 6" PIPE
12" FOR 8" PIPE AND ABOVE.



SIDE VIEW

NOTES:

- 1 - METER, GATE VALVES, WYE STRAINER, BACKFLOW ASSEMBLY, BY PASS LINE (3" AND LARGER), AND PIPE SUPPORTS WILL BE PROVIDED BY TOHO WATER AUTHORITY, PAID FOR BY DEVELOPER AND INSTALLED BY CONTRACTOR. BACKFLOW PREVENTERS SMALLER THAN 3" MAY BE PROVIDED BY THE DEVELOPER.
- 2 - GALVANIZED PIPE IS NOT ALLOWED
- 3 - LOCATE PIPE SUPPORTS PROVIDED BY TOHO WATER AUTHORITY UNDER PIPING.
- 4 - CONTACT TOHO WATER AUTHORITY FOR ORDERING ASSEMBLY AT (407) 518-2502, FAX: (407) 933-7662.
- 5 - ORDER ASSEMBLY 30 WORKING DAYS PRIOR TO REQUIRED DELIVERY DATE.
- 6 - INSTALL PROTECTIVE BOLLARD(S) AS LOGIC DICTATES (SEE DETAIL TWA-28).
- 7 - BACKFLOW PREVENTER ASSEMBLIES SHALL BE DCV (DOUBLE CHECK VALVE) FOR OFFICE SPACE, RPZ (REDUCED PRESSURE ZONE) FOR HIGH HAZARD LOCATIONS AND BOTH TO BE INSTALLED A MINIMUM OF 12" ABOVE THE FLOOD PLAIN; PVB (PRESSURE VACUUM BREAKER) FOR IRRIGATION (INSTALLED MINIMUM OF 12" ABOVE THE HIGHEST OUTLET).
8. MAINTAIN A MINIMUM OF 3' CLEARANCE FREE OF ALL PLANTINGS & STRUCTURES AROUND METER/BACKFLOW ASSEMBLY.

**WATER SERVICE
METER/BACKFLOW ASSEMBLY**

TWA-22
2009

(THIS DETAIL IS NOT APPLICABLE TO FIRE LINE BACKFLOW ASSEMBLIES)